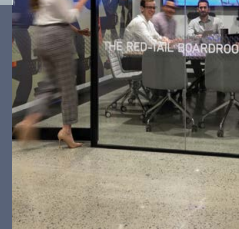
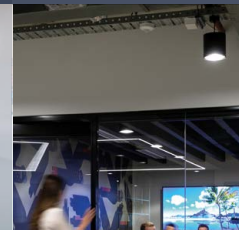




Price List

FY24/25







Private Offices

	From
143 St Georges Terrace, Perth CBD	\$799
197 St Georges Terrace, Perth CBD	\$749
37 St Georges Terrace, Perth CBD	\$725
2 The Esplanade, Perth CBD	\$749
1060 Hay Street, West Perth City Fringe	\$549
162 Grand Boulevard, Joondalup Perth Metro	\$549
558 Pacific Highway, St Leonard's Sydney Metro	\$699
56 Berry Street, North Sydney Sydney Metro	\$499
127 Creek Street, Brisbane CBD	\$549

*Costs shown are per workstation per month and exclude GST.
Floorplans are available on request.*

Includes

- Furnished private office space
- Rent, outgoings, air-conditioning and utilities
- Prestigious and credible mailing address
- Professionally managed 'front of house' reception services
- Calls answered in your company name
- Message taking
- Access to Direct Dial and voicemail
- Discounted call tariffs
- Wi-Fi connection
- Daily cleaning, onsite recycling & regular housekeeping checks
- Secure document disposal
- End of trip facilities and bike storage
- 24/7 access
- Access to administrative support on a pay per use basis
- Discounted call tariffs
- 30% discount on all meeting room bookings
- Access to a calendar of programs and events



Coworking

	143 & 197 St Georges Terrace Perth CBD	558 Pacific Highway St Leonard's	2 The Esplanade Perth CBD	162 Grand Boulevard Joondalup	127 Creek Street Brisbane	56 Berry Street North Sydney
Day pass						
Per day	\$37	\$37	\$37	\$37	\$37	\$30
Mailing address (per month)	\$85	\$85	\$85	\$85	\$85	\$85
Call answering/dedicated tel. no. (per month)	\$100	\$100	\$100	\$100	\$100	\$100
Inclusive meeting room (per month)	N	N	N	N	N	N
Flexi-time						
Per month	\$299	\$299	\$299	\$299	\$299	\$199
Mailing address	Included	Included	Included	Included	Included	Included
Call answering/dedicated tel. no (per month)	\$100	\$100	\$100	\$100	\$100	\$100
Inclusive meeting room (per month)	1 hour	1 hour	1 hour	1 hour	1 hour	1 hour
Full-time						
Per month	\$599	\$599	\$599	\$599	\$499	\$349
Mailing address	Included	Included	Included	Included	Included	Included
Call answering/dedicated tel. no.	Included	Included	Included	Included	Included	Included
Inclusive meeting room (per month)	4 hours	4 hours	4 hours	4 hours	4 hours	4 hours

What's included?

	Day pass	Flexi-time	Full-time
Access to co-working	1 day, Mon-Fri	2 days per week, Mon-Fri	7 days per week
Access times	08.30 - 17.00	08.30 - 17.00	24 hours
High speed, secure internet access	Y	Y	Y
Events & networking invitations	Y	Y	Y
Showers and bike storage*	Y	Y	Y
Discounted access to meeting rooms	Y	Y	Y
Admin support & printing	PAYG	PAYG	PAYG

*Where available.

Virtual Receptionist

	Bronze	Silver	Gold	Platinum
Unique Company Telephone Number & Script protocol*	Y	Y	Y	Y
Personalised call answering and transfer	Y	Y	Y	Y
Message taking and forwarding by email	Y	Y	Y	Y
Voicemail (Out of hours forwarded by email)	Y	Y	Y	Y
Co-working/lounge access (per month)	Half Day	1 Day	2 Days	3 Days
Discounted access to meeting rooms (30% off)	Y	Y	Y	Y
No. of team members/call recipients (Up to)	1	4	7	10
Call Volume per month ** (Up to)	50	100	200	300
Cost per month (plus GST)	\$100	\$200	\$300	\$400

Calls are answered between 8.30am – 5.00pm, excludes public holidays.

Plans for more than 300 calls or 10 team members/call recipients are available upon request – Please contact our team for a bespoke quotation.

*Each unique company telephone is answered with a scripted protocol and dealt with according to your business' specific requirements.

**We charge an extra \$2.50 per call over this for answering, transferring, or taking/forwarding messages

Costs shown are per month and exclude GST.



Virtual Business Mailing Address & Virtual Office

Virtual Business Mailing Address

A prestigious virtual office address for mail collection.

Virtual Business Mailing Address

Perth Metro (162 Grand Boulevard, Joondalup)	\$65
Perth CBD Standard (37 St Georges Terrace & 1060 Hay Street)	\$75
Perth CBD Premium (2 The Esplanade, 143 & 197 St Georges Terrace)	\$85
Brisbane CBD (127 Creek Street)	\$85
Sydney Metro (56 Berry Street, 558 Pacific Highway)	\$95

Virtual Office

Virtual Office combines Virtual Reception Call-answering with a Virtual Business Mailing Address

Virtual Business Mailing Address & Call-answering	Bronze	Silver	Gold	Platinum
Perth Metro (162 Grand Boulevard, Joondalup)	\$155	\$255	\$355	\$455
Perth CBD Standard (37 St Georges Terrace & 1060 Hay Street)	\$165	\$265	\$365	\$465
Perth CBD Premium (2 The Esplanade, 143 & 197 St Georges Terrace)	\$175	\$275	\$375	\$475
Brisbane CBD (127 Creek Street)	\$175	\$275	\$375	\$475
Sydney Metro (56 Berry Street, 558 Pacific Highway)	\$185	\$285	\$385	\$485

Costs shown are per month and exclude GST.



Meeting & Event Spaces

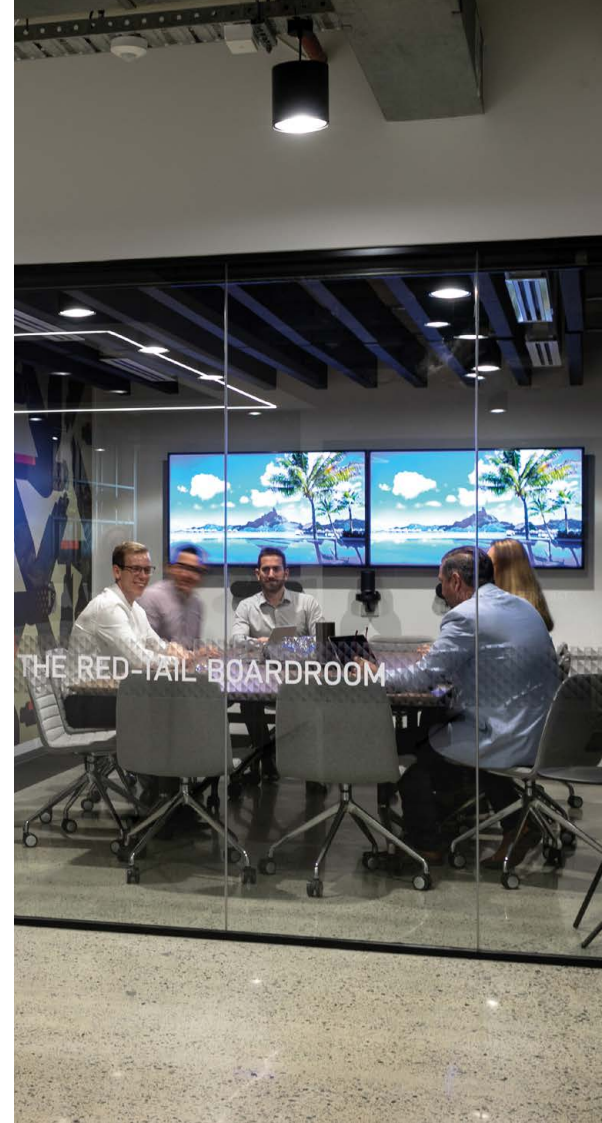
- Interviews
- Meetings
- Workshops
- Training
- Presentations
- Events
- Podcasts
- Video Conferencing

We offer first-class facilities, and impeccable service at locations across the Perth Metro area by the hour, or on a half-day and full-day basis.

Most rooms have a large screen TV, which is included in the room hire if equipped. Logitech video meeting equipment is available to hire at most locations. White boards and flip charts are included in the room hire where available.

If you need drinks or catering for a breakfast, lunch, afternoon tea, or sundowner buffet, we can organise that too.

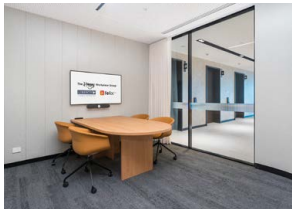
The following costs shown exclude GST.





Non standard equipment hire	Cost
Projector hire (hour)	\$20 per hour
Projector hire (half day)	\$75 half day
Projector hire (full day)	\$125 full day
*logitech Video meeting enabled equipment hire	\$50 per meeting
White board (<i>subject to availability</i>)	FOC
Flip chart (<i>subject to availability</i>)	FOC

143 St Georges Terrace Perth CBD



The Banksia Room

Capacity	Cost
4 PAX	\$65 per hour \$230 half day \$425 full day



The Acacia Room

Capacity	Cost
7 PAX	\$90 per hour \$325 half day \$595 full day



The Eucalyptus Boardroom

Capacity	Cost
12 PAX	\$115 per hour \$395 half day \$750 full day



The Karri Boardroom

Capacity	Cost
14 PAX	\$150 per hour \$550 half day \$995 full day

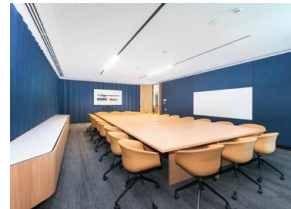


143 St Georges Terrace Perth CBD (continued)



The Flame Tree Boardroom

Capacity	Cost
22-50 PAX	\$195 per hour \$750 half day \$1,395 full day



The Jarrah Boardroom

Capacity	Cost
24 PAX	\$175 per hour \$650 half day \$1,195 full day



The Lounge

Capacity	Cost
50 PAX	\$500 per evening Additional Staff fees apply.



The Flame Tree Boardroom & The Lounge

Capacity	Cost
50 PAX	\$TBC



Non standard equipment hire	Cost
Projector hire (hour)	\$20 per hour
Projector hire (half day)	\$75 half day
Projector hire (full day)	\$125 full day
* logitech Video meeting enabled equipment hire	\$50 per meeting
White board (<i>subject to availability</i>)	FOC
Flip chart (<i>subject to availability</i>)	FOC

197 St Georges Terrace Perth CBD



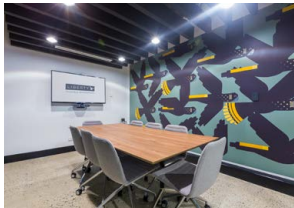
Podcast studio

Capacity	Cost
2 PAX	\$40 per hour \$140 half day \$260 full day



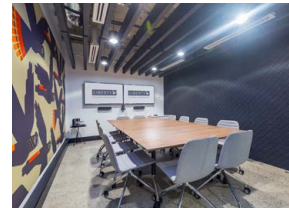
Black Swan Meeting Room

Capacity	Cost
4 PAX	\$65 per hour \$230 half day \$425 full day



Yellow-tail Meeting Room*

Capacity	Cost
8 PAX	\$90 per hour \$315 half day \$585 full day



Red-tail Boardroom*

Capacity	Cost
12 PAX	\$120 per hour \$420 half day \$780 full day



Non standard equipment hire	Cost
* logitech Video meeting enabled equipment hire	\$50 per meeting
White board (<i>subject to availability</i>)	FOC
Flip chart (<i>subject to availability</i>)	FOC

37 St Georges Terrace Perth CBD



Kookaburra Meeting Room

Capacity	Cost
4 PAX	\$65 per hour \$230 half day \$425 full day



Sandpiper Boardroom*

Capacity	Cost
12 PAX	\$115 per hour \$405 half day \$750 full day



Non standard equipment hire	Cost
* logitech Video meeting enabled equipment hire	\$50 per meeting
White board (<i>subject to availability</i>)	FOC
Flip chart (<i>subject to availability</i>)	FOC

2 The Esplanade Perth CBD



Finch Meeting Room

Capacity	Cost
4 PAX	\$75 per hour \$275 half day \$495 full day



Swan Boardroom

Capacity	Cost
9 PAX	\$100 per hour \$350 half day \$650 full day



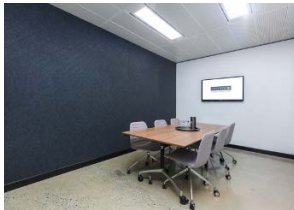
Pelican Boardroom

Capacity	Cost
22 PAX	\$150 per hour \$575 half day \$1,100 full day



Non standard equipment hire	Cost
* logitech Video meeting enabled equipment hire	\$50 per meeting
White board (<i>subject to availability</i>)	FOC
Flip chart (<i>subject to availability</i>)	FOC

1060 Hay Street West Perth



Wagtail Meeting Room

Capacity	Cost
up to 8 PAX	\$65 per hour
	\$230 half day
	\$425 full day



Firetail Boardroom*

Capacity	Cost
12 PAX	\$80 per hour
	\$280 half day
	\$520 full day



Non standard equipment hire	Cost
* logitech Video meeting enabled equipment hire	\$50 per meeting
White board (<i>subject to availability</i>)	FOC
Flip chart (<i>subject to availability</i>)	FOC

162 Grand Boulevard Joondalup



Eagle Meeting Room*

Capacity	Cost
8 PAX	\$60 per hour \$210 half day \$390 full day



Osprey Boardroom*

Capacity	Cost
12 PAX	\$85 per hour \$300 half day \$555 full day



Kestrel Boardroom

Capacity	Cost
20 PAX	\$110 per hour \$395 half day \$695 full day



Non standard equipment hire	Cost
Projector hire (hour)	\$20 per hour
Projector hire (half day)	\$75 half day
Projector hire (full day)	\$125 full day
*logitech Video meeting enabled equipment hire	\$50 per meeting
White board (<i>subject to availability</i>)	FOC
Flip chart (<i>subject to availability</i>)	FOC

56 Berry Street North Sydney

IMAGE COMING
SOON

Curlew Meeting Room

Capacity	Cost
3 PAX	\$35 per hour \$125 half day \$235 full day

IMAGE COMING
SOON

Honeyeater Meeting Room

Capacity	Cost
4 PAX	\$45 per hour \$160 half day \$300 full day

IMAGE COMING
SOON

Rosella Meeting Room

Capacity	Cost
4 PAX	\$45 per hour \$160 half day \$300 full day

IMAGE COMING
SOON

Parrot Meeting Room

Capacity	Cost
6 PAX	\$50 per hour \$180 half day \$340 full day



Non standard equipment hire	Cost
Projector hire (hour)	\$20 per hour
Projector hire (half day)	\$75 half day
Projector hire (full day)	\$125 full day
*logitech Video meeting enabled equipment hire	\$50 per meeting
White board (<i>subject to availability</i>)	FOC
Flip chart (<i>subject to availability</i>)	FOC

56 Berry Street North Sydney

IMAGE COMING
SOON

Raven Boardroom

Capacity	Cost
8 PAX	\$65 per hour
	\$230 half day
	\$440 full day

IMAGE COMING
SOON

Magpie Boardroom

Capacity	Cost
8 PAX	\$65 per hour
	\$230 half day
	\$440 full day

IMAGE COMING
SOON

Heron Boardroom

Capacity	Cost
10 PAX	\$75 per hour
	\$270 half day
	\$500 full day

IMAGE COMING
SOON

Falcon Boardroom

Capacity	Cost
12 PAX	\$85 per hour
	\$300 half day
	\$550 full day



Non standard equipment hire	Cost
Projector hire (hour)	\$20 per hour
Projector hire (half day)	\$75 half day
Projector hire (full day)	\$125 full day
*logitech Video meeting enabled equipment hire	\$50 per meeting
White board (<i>subject to availability</i>)	FOC
Flip chart (<i>subject to availability</i>)	FOC

558 Pacific Highway St Leonard's

IMAGE COMING SOON

Fantail Meeting Room

Capacity	Cost
4 PAX	\$65 per hour
	\$230 half day
	\$425 full day

IMAGE COMING SOON

Dove Meeting Room

Capacity	Cost
8 PAX	\$90 per hour
	\$325 half day
	\$595 full day

IMAGE COMING SOON

Corella Boardroom

Capacity	Cost
10 PAX	\$115 per hour
	\$395 half day
	\$750 full day

IMAGE COMING SOON

Thornbill Boardroom

Capacity	Cost
24 PAX	\$195 per hour
	\$750 half day
	\$1395 full day



Non standard equipment hire	Cost
Projector hire (hour)	\$20 per hour
Projector hire (half day)	\$75 half day
Projector hire (full day)	\$125 full day
* logitech Video meeting enabled equipment hire	\$50 per meeting
White board (<i>subject to availability</i>)	FOC
Flip chart (<i>subject to availability</i>)	FOC

127 Creek Street Brisbane

IMAGE COMING SOON

Quail Meeting Room

Capacity	Cost
4 PAX	\$45 per hour \$155 half day \$275 full day

IMAGE COMING SOON

Kite Meeting Room

Capacity	Cost
8 PAX	\$65 per hour \$235 half day \$435 full day

IMAGE COMING SOON

Ibis Meeting Room

Capacity	Cost
8 PAX	\$65 per hour \$235 half day \$435 full day

IMAGE COMING SOON

Whistler Boardroom

Capacity	Cost
10 PAX	\$95 per hour \$275 half day \$475 full day



Refreshments

Breakfast options from \$5.50
per person

Lunch options from \$13.65
per person

**Afternoon Tea
options** from \$5.50
per person

**Gourmet teas
and Nespresso
coffees** from \$4.00
per serve

**Cold drinks available
on request**

Costs shown exclude GST.





Support Services

Item	Cost
Printing A4 Black and White	\$0.10 per page
Printing A4 Colour	\$0.25 per page
Printing A3 Black and White	\$0.15 per page
Printing A3 Colour	\$0.35 per page
Scanning A4 Black and White/Colour	\$0 FOC
Scanning A3 Black and White/colour	\$0 FOC
Document Binding	\$3.75 each
Document Laminating A4	\$3 per page
Document Laminating A3	\$4 per page
Postage / Couriers	Cost plus 20% handling and admin fee
Generic envelope Small C5	\$0.10 each
Generic envelope Large A4	\$0.20 each
Express Post- Small envelope	\$8.95 each
Express Post- A4 Large envelope	\$10.60 each
Office Stationery / Supplies	Request Quote

Costs shown exclude GST.

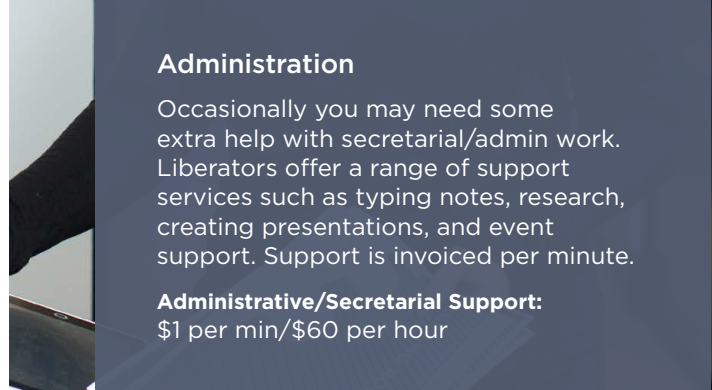


Administration

Occasionally you may need some extra help with secretarial/admin work. Liberators offer a range of support services such as typing notes, research, creating presentations, and event support. Support is invoiced per minute.

Administrative/Secretarial Support:

\$1 per min/\$60 per hour



Private office hire

	Per hour	Half day	Full day
per person (from)	\$20	\$70	\$130

Drinks

Item	Cost
Nespresso coffee pods	\$2.75 each
Nespresso coffee pods - 50 pack	\$70 per box (\$1.40 per pod)
Barista coffee (where available)	\$4.00 each

Special

Item	Cost
After hours air-conditioning* (minimum 2 hrs \$180)	from \$90 per hour
Courier services (worldwide & local)	Request quote
Dry cleaning	Request quote

Car parking bay (Subject to availability)

Location	Cost
143 St George's Terrace, Perth CBD	\$900pm [^]
197 St George's Terrace, Perth CBD	\$875pm [^]
37 St George's Terrace, Perth CBD	\$850pm [^]
1060 Hay Street, West Perth	from \$390pm [^]
2 The Esplanade, Perth CBD	from \$1,000pm [^]
162 Grand Boulevard, Joondalup	\$100pm [^]
56 Berry Street, North Sydney	\$825pm [^]

*Costs vary by location.

Costs shown exclude GST. [^]Parking Levy included.





Fully Managed, All Inclusive, Secure IT Support

Gold IT (Essential) \$180 per user per month, includes:

- Microsoft 365 (Business email and cloud file storage, Outlook, Word, Excel, Teams)*
- Microsoft 365 Backup (email, files, and Teams data backed up to our secure data centre)
- Multi-Factor Authentication
- Phishing Protection & Email Security
- Email Signature Management
- File Storage / Document Management (SharePoint, Teams, OneDrive or NextDrive)
- PC Monitoring, Maintenance, and Optimisation
- Windows Device Encryption
- Next-gen Antivirus
- Breach Detection
- Privileged Account Management
- Asset and Vendor Management (Full lifecycle management of all your IT devices)
- Unlimited local 24/7 IT Support
- Dedicated IT Consultant

Platinum IT (Advanced) \$250 per user per month, includes Gold IT, plus:

- Microsoft 365 Security Upgrade (advanced security features)
- Conditional Access
- Advanced Multi -actor Authentication
- Advanced AI Phishing and Spam Detection
- Advanced AI Collaboration and Cloud File Protection
- Endpoint Detection and Response
- Comprehensive Device Encryption
- Password Management
- Dark Web Monitoring
- Website & Social Media Monitoring
- Phishing Simulation
- Human Risk Management
- IT Policy Management

*Software licensing such as Microsoft Office and Email is included





Connectivity

Shared Network – Fully Managed Networks

Our Shared Network is designed to provide a seamless, high-quality, and secure internet experience and offers 3 levels of service.

Network	Connection Fee	Bandwidth ¹	Monthly p/p
Shared Standard	FREE	20/20Mbps	Free
Shared Pro	FREE	100/100Mbps	\$49
Shared Elite	FREE	250/250Mbps	\$79

Private Networks – Dedicated, Fully Managed Networks (Private VLAN)

We also offer fully managed contracts ranging from 50Mbps to 200Mbps data speeds to your private fully managed network.

Bandwidth ²	50Mbps	100Mbps	150Mbps ³	200Mbps ³
Setup/Connection Fee	FREE	FREE	FREE	FREE
3-month term (per month)	\$325	\$550	\$650	\$750
6-month term (per month)	\$300	\$500	\$600	\$700
9-month term (per month)	\$275	\$450	\$550	\$650
12-month term (per month)	\$250	\$400	\$500	\$600
24-month term (per month)	\$225	\$350	\$450	\$550
36-month term (per month)	\$200	\$300	\$400	\$500

¹Maximum bandwidth – shared amongst the devices on the network

²Individual device limits can be set at your request

³Not currently available at our Hay Street centre





Advanced VoIP Phone Solutions & 1300 Numbers

Advanced VoIP Phone Solutions

Our VoIP solution is a full feature business VoIP phone solution. Does everything a modern phone solution should do and more.

This is a fully managed (unlimited support and change requests) solution.

Handset rental and all local, national and mobile call costs in Australia are included*

- Work from anywhere configuration – you can take your desk phone anywhere
- Unlimited phone calls (local, national and mobile) - International calls are charged based on destination*
- Voicemail – send to email functionality
- Hunt Group Functionality
- Call Forwarding
- Simultaneous Ring
- Sequential Ring



1300 Numbers

A 1300 number is a powerful marketing tool that boosts your customer experience and brand image.

National Presence:

Expand your reach nationwide and tap into new markets. With a 1300 number, customers from all over Australia can easily reach you, no matter where you operate.

Increased Engagement:

Provide convenience to your customers with a single contact point. A 1300 number ensures a seamless experience, resulting in higher satisfaction and engagement.

Enhanced Professionalism:

Stand out from the competition with a professional image. A 1300 number adds credibility to your business and builds trust with customers.

Improved Marketing:

Create memorable vanity numbers aligned with your brand. Advanced call routing and tracking features help you optimise marketing strategies.

Cost-Effective:

Enjoy affordable plans and pricing options. Efficient call routing reduces the need for extra staff or infrastructure.

Costs

1300 YourBusinessNameInNumbers: Secure it for \$500+GST plus \$50+GST per month

1300 RandomNumber: Secure it for \$250+GST plus \$50+GST per month

1300 number comes with 100 minutes of calls per month included. 10c p/min thereafter.