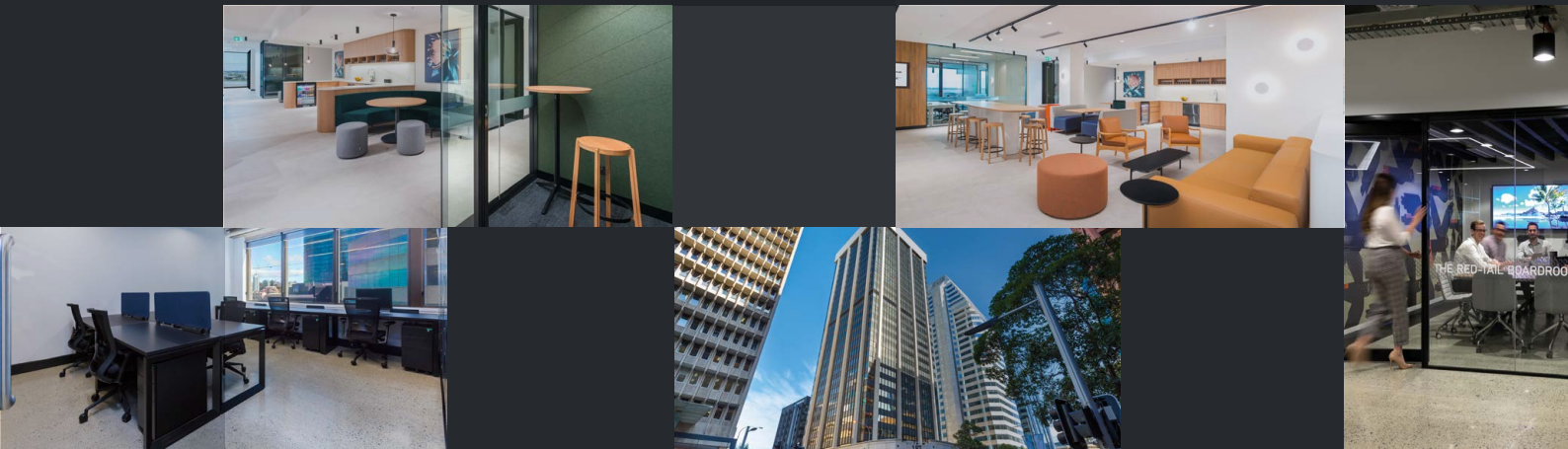


# Price List

2025

LIBERTY ™  
FLEXIBLE WORKSPACES









## Private Offices

	From
143 St Georges Terrace, Perth CBD	\$699
197 St Georges Terrace, Perth CBD	\$649
37 St Georges Terrace, Perth CBD	\$649
2 The Esplanade, Perth CBD	\$649
1060 Hay Street, West Perth City Fringe	\$399
162 Grand Boulevard, Joondalup Perth Metro	\$449
558 Pacific Highway, St Leonard's Sydney Metro	\$499
56 Berry Street, North Sydney Sydney Metro	\$299
127 Creek Street, Brisbane CBD	\$499

*Costs shown are per workstation per month and exclude GST.  
Floorplans are available on request.*

### Includes

- Furnished private office space
- Rent, outgoings, air-conditioning and utilities
- Prestigious and credible mailing address
- Professionally managed 'front of house' reception services
- Calls answered in your company name
- Message taking
- Access to Direct Dial and voicemail
- Wi-Fi connection
- Daily cleaning, onsite recycling & regular housekeeping checks
- Secure document disposal
- End of trip facilities and bike storage
- 24/7 access
- Access to administrative support on a pay per use basis
- Discounted call tariffs
- 30% discount on all meeting room bookings
- Access to a calendar of programs and events



## Coworking

	143 & 197 St Georges Terrace Perth CBD	558 Pacific Highway St Leonard's	2 The Esplanade Perth CBD	162 Grand Boulevard Joondalup	127 Creek Street Brisbane	56 Berry Street North Sydney
Day pass						
Per day	\$37	\$37	\$37	\$37	\$35	\$30
Mailing address (per month)	\$85	\$85	\$85	\$85	\$85	\$85
Call answering/dedicated tel. no. (per month)	\$100	\$100	\$100	\$100	\$100	\$100
Inclusive meeting room (per month)	N	N	N	N	N	N
Flexi-time						
Per month	\$229	\$229	\$229	\$229	\$199	\$129
Mailing address	Included	Included	Included	Included	Included	Included
Call answering/dedicated tel. no (per month)	\$100	\$100	\$100	\$100	\$100	\$100
Inclusive meeting room (per month)	1 hour	1 hour	1 hour	1 hour	1 hour	1 hour
Full-time						
Per month	\$499	\$399	\$499	\$399	\$299	\$199
Mailing address	Included	Included	Included	Included	Included	Included
Call answering/dedicated tel. no.	Included	Included	Included	Included	Included	Included
Inclusive meeting room (per month)	4 hours	4 hours	4 hours	4 hours	4 hours	4 hours

## What's included?

	Day pass	Flexi-time	Full-time
<b>Access to co-working</b>	1 day, Mon-Fri	2 days per week, Mon-Fri	7 days per week
<b>Access times</b>	08.30 - 17.00	08.30 - 17.00	24 hours
<b>High speed, secure internet access</b>	Y	Y	Y
<b>Events &amp; networking invitations</b>	Y	Y	Y
<b>Showers and bike storage*</b>	Y	Y	Y
<b>Discounted access to meeting rooms</b>	Y	Y	Y
<b>Admin support &amp; printing</b>	PAYG	PAYG	PAYG

*\*Where available.*

## Virtual Receptionist

	Bronze	Silver	Gold	Platinum
Unique Company Telephone Number & Script protocol*	Y	Y	Y	Y
Personalised call answering and transfer	Y	Y	Y	Y
Message taking and forwarding by email	Y	Y	Y	Y
Voicemail (Out of hours forwarded by email)	Y	Y	Y	Y
Co-working/lounge access (per month)	Half Day	1 Day	2 Days	3 Days
Discounted access to meeting rooms (30% off)	Y	Y	Y	Y
No. of team members/call recipients (Up to)	1	4	7	10
Call Volume per month * *(Up to)	50	100	200	300
Cost per month (plus GST)	\$100	\$200	\$300	\$400

Calls are answered between 8.30am – 5.00pm, excludes public holidays.

Plans for more than 300 calls or 10 team members/call recipients are available upon request – Please contact our team for a bespoke quotation.

\*Each unique company telephone is answered with a scripted protocol and dealt with according to your business' specific requirements.

\*\*We charge an extra \$2.50 per call over this for answering, transferring, or taking/forwarding messages

Costs shown are per month and exclude GST.



## Virtual Business Mailing Address & Virtual Office

### Virtual Business Mailing Address

A prestigious virtual office address for mail collection.

#### Virtual Business Mailing Address

<b>Perth Metro</b> (162 Grand Boulevard, Joondalup)	\$65
<b>Perth CBD Standard</b> (37 St Georges Terrace & 1060 Hay Street)	\$75
<b>Perth CBD Premium</b> (2 The Esplanade, 143 & 197 St Georges Terrace)	\$85
<b>Brisbane CBD</b> (127 Creek Street)	\$85
<b>Sydney Metro</b> (56 Berry Street, 558 Pacific Highway)	\$95

### Virtual Office

Virtual Office combines Virtual Reception Call-answering with a Virtual Business Mailing Address

Virtual Business Mailing Address & Call-answering	Bronze	Silver	Gold	Platinum
<b>Perth Metro</b> (162 Grand Boulevard, Joondalup)	\$155	\$255	\$355	\$455
<b>Perth CBD Standard</b> (37 St Georges Terrace & 1060 Hay Street)	\$165	\$265	\$365	\$465
<b>Perth CBD Premium</b> (2 The Esplanade, 143 & 197 St Georges Terrace)	\$175	\$275	\$375	\$475
<b>Brisbane CBD</b> (127 Creek Street)	\$175	\$275	\$375	\$475
<b>Sydney Metro</b> (56 Berry Street, 558 Pacific Highway)	\$185	\$285	\$385	\$485

Costs shown are per month and exclude GST.





## Meeting & Event Spaces

---

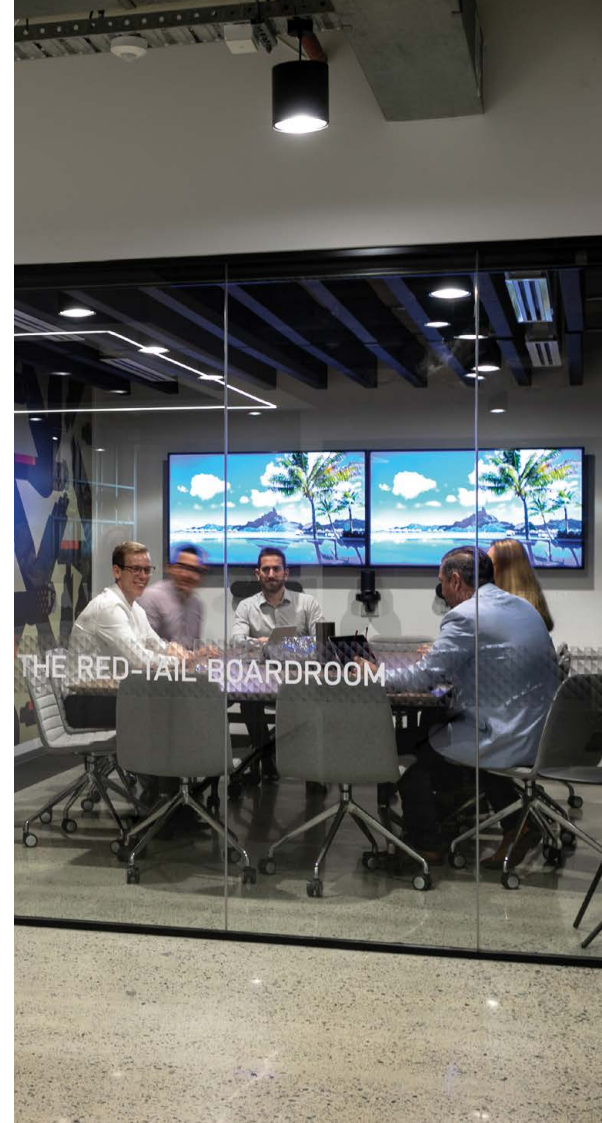
- Interviews
- Meetings
- Workshops
- Training
- Presentations
- Events
- Podcasts
- Video Conferencing

We offer first-class facilities, and impeccable service at locations across the Perth Metro & CBD, Sydney's North Shore & Brisbane CBD by the hour, or on a half-day and full-day basis.

Most rooms have a large screen TV, which is included in the room hire if equipped. Logitech video meeting equipment is available to hire at most locations. White boards and flip charts are included in the room hire where available.

If you need drinks or catering for a breakfast, lunch, afternoon tea, or sundowner buffet, we can organise that too.

The following costs shown exclude GST.

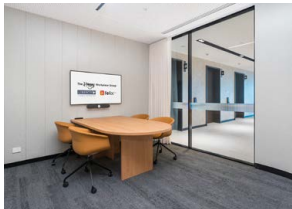






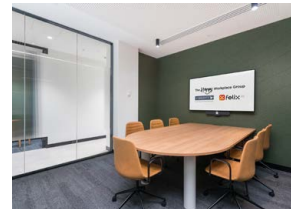
Non standard equipment hire	Cost
White board ( <i>subject to availability</i> )	FOC
Flip chart ( <i>subject to availability</i> )	FOC
* <b>logitech</b> Video meeting enabled equipment hire	\$50 per meeting

## 143 St Georges Terrace Perth CBD



### The Banksia Room

Capacity	Cost
4 PAX	\$45 per hour \$165 half day \$300 full day



### The Acacia Room

Capacity	Cost
7 PAX	\$75 per hour \$275 half day \$495 full day



### The Eucalyptus Boardroom

Capacity	Cost
12 PAX	\$90 per hour \$325 half day \$595 full day



### The Karri Boardroom

Capacity	Cost
14 PAX	\$150 per hour \$550 half day \$995 full day



## 143 St Georges Terrace *Perth CBD (continued)*



### The Flame Tree Boardroom

Capacity	Cost
22-50 PAX	\$195 per hour \$750 half day \$1,395 full day



### The Jarrah Boardroom

Capacity	Cost
24 PAX	\$175 per hour \$650 half day \$1,195 full day



### The Lounge

Capacity	Cost
50 PAX	\$500 per evening Additional Staff fees apply.



### The Flame Tree Boardroom & The Lounge

Capacity	Cost
50 PAX	\$POA



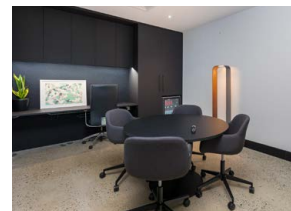
## 197 St Georges Terrace Perth CBD

Non standard equipment hire	Cost
White board ( <i>subject to availability</i> )	FOC
Flip chart ( <i>subject to availability</i> )	FOC
* <b>logitech</b> Video meeting enabled equipment hire	\$50 per meeting



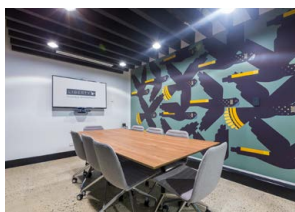
### Podcast studio

Capacity	Cost
2 PAX	\$15 per hour \$55 half day \$100 full day



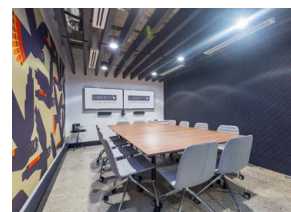
### Black Swan Meeting Room

Capacity	Cost
4 PAX	\$45 per hour \$165 half day \$300 full day



### Yellow-tail Meeting Room\*

Capacity	Cost
8 PAX	\$75 per hour \$275 half day \$495 full day



### Red-tail Boardroom\*

Capacity	Cost
12 PAX	\$90 per hour \$325 half day \$595 full day





## 37 St Georges Terrace Perth CBD

Non standard equipment hire	Cost
White board ( <i>subject to availability</i> )	FOC
Flip chart ( <i>subject to availability</i> )	FOC
* <b>logitech</b> Video meeting enabled equipment hire	\$50 per meeting



### Kookaburra Meeting Room

Capacity	Cost
4 PAX	\$45 per hour \$165 half day \$300 full day



### Sandpiper Boardroom\*

Capacity	Cost
12 PAX	\$115 per hour \$405 half day \$750 full day



## 2 The Esplanade Perth CBD

Non standard equipment hire	Cost
White board ( <i>subject to availability</i> )	FOC
Flip chart ( <i>subject to availability</i> )	FOC
* <b>logitech</b> Video meeting enabled equipment hire	\$50 per meeting



### Finch Meeting Room

Capacity	Cost
4 PAX	\$45 per hour \$165 half day \$300 full day



### Swan Boardroom

Capacity	Cost
9 PAX	\$75 per hour \$275 half day \$495 full day



### Pelican Boardroom

Capacity	Cost
22 PAX	\$150 per hour \$575 half day \$1,100 full day



### Conference Centre

Capacity	Cost
114 PAX	\$540 half day \$960 full day + \$75 cleaning fee



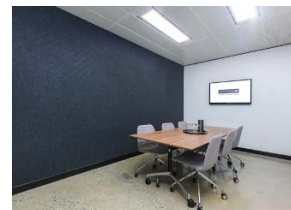
1060 Hay Street West Perth

Non standard equipment hire	Cost
White board ( <i>subject to availability</i> )	FOC
Flip chart ( <i>subject to availability</i> )	FOC
* <b>logitech</b> Video meeting enabled equipment hire	\$50 per meeting



### Sparrow Meeting Room

Capacity	Cost
4 PAX	\$25 per hour \$90 half day \$165 full day



### Wagtail Meeting Room

Capacity	Cost
6 PAX	\$45 per hour \$165 half day \$300 full day



### Firetail Boardroom\*

Capacity	Cost
12 PAX	\$70 per hour \$255 half day \$460 full day





## 162 Grand Boulevard Joondalup

Non standard equipment hire	Cost
White board ( <i>subject to availability</i> )	FOC
Flip chart ( <i>subject to availability</i> )	FOC
* <b>logitech</b> Video meeting enabled equipment hire	\$50 per meeting



### Eagle Meeting Room\*

Capacity	Cost
8 PAX	\$60 per hour \$210 half day \$390 full day



### Osprey Boardroom\*

Capacity	Cost
12 PAX	\$85 per hour \$300 half day \$555 full day



### Kestrel Boardroom

Capacity	Cost
20 PAX	\$110 per hour \$395 half day \$695 full day



Non standard equipment hire	Cost
White board ( <i>subject to availability</i> )	FOC
Flip chart ( <i>subject to availability</i> )	FOC
* <b>logitech</b> Video meeting enabled equipment hire	\$50 per meeting

## 56 Berry Street North Sydney



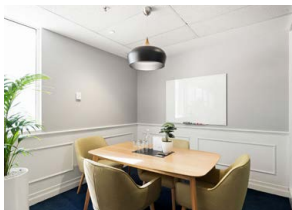
### Curlew Meeting Room

Capacity	Cost
3 PAX	\$35 per hour \$125 half day \$235 full day



### Honeyeater Meeting Room

Capacity	Cost
4 PAX	\$45 per hour \$160 half day \$300 full day



### Rosella Meeting Room

Capacity	Cost
4 PAX	\$45 per hour \$160 half day \$300 full day



### Parrot Meeting Room

Capacity	Cost
6 PAX	\$50 per hour \$180 half day \$340 full day



Non standard equipment hire	Cost
White board ( <i>subject to availability</i> )	FOC
Flip chart ( <i>subject to availability</i> )	FOC
* <b>logitech</b> Video meeting enabled equipment hire	\$50 per meeting

## 56 Berry Street North Sydney



### Raven Boardroom

Capacity	Cost
8 PAX	\$65 per hour \$230 half day \$440 full day



### Magpie Boardroom

Capacity	Cost
8 PAX	\$65 per hour \$230 half day \$440 full day



### Heron Boardroom

Capacity	Cost
10 PAX	\$75 per hour \$270 half day \$500 full day



### Falcon Boardroom

Capacity	Cost
12 PAX	\$85 per hour \$300 half day \$550 full day





Non standard equipment hire	Cost
White board ( <i>subject to availability</i> )	FOC
Flip chart ( <i>subject to availability</i> )	FOC
* <b>logitech</b> Video meeting enabled equipment hire	\$50 per meeting

## 558 Pacific Highway St Leonards



### Fantail Meeting Room

Capacity	Cost
4 PAX	\$65 per hour \$230 half day \$425 full day



### Thornbill Meeting Room

Capacity	Cost
8 PAX	\$90 per hour \$325 half day \$595 full day



### Corella Boardroom

Capacity	Cost
10 PAX	\$115 per hour \$395 half day \$750 full day



### Dove Boardroom

Capacity	Cost
24 PAX	\$195 per hour \$750 half day \$1395 full day



Non standard equipment hire	Cost
White board ( <i>subject to availability</i> )	FOC
Flip chart ( <i>subject to availability</i> )	FOC
* <b>logitech</b> Video meeting enabled equipment hire	\$50 per meeting

## 127 Creek Street Brisbane



### Quail Meeting Room

Capacity	Cost
4 PAX	\$45 per hour \$155 half day \$275 full day



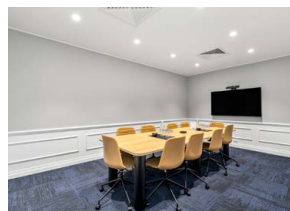
### Kite Meeting Room

Capacity	Cost
8 PAX	\$65 per hour \$235 half day \$435 full day



### Ibis Meeting Room

Capacity	Cost
8 PAX	\$65 per hour \$235 half day \$435 full day



### Whistler Boardroom

Capacity	Cost
10 PAX	\$95 per hour \$275 half day \$475 full day

## Refreshments

---

Breakfast options      from \$6.00 per person

Lunch options        from \$13.20 per person

Afternoon Tea options    from \$6.00 per person

Gourmet teas            from \$2.75 per serve

Nespresso Coffee        from \$4.00 per serve

Cold drinks available  
on request

---

Costs shown exclude GST.



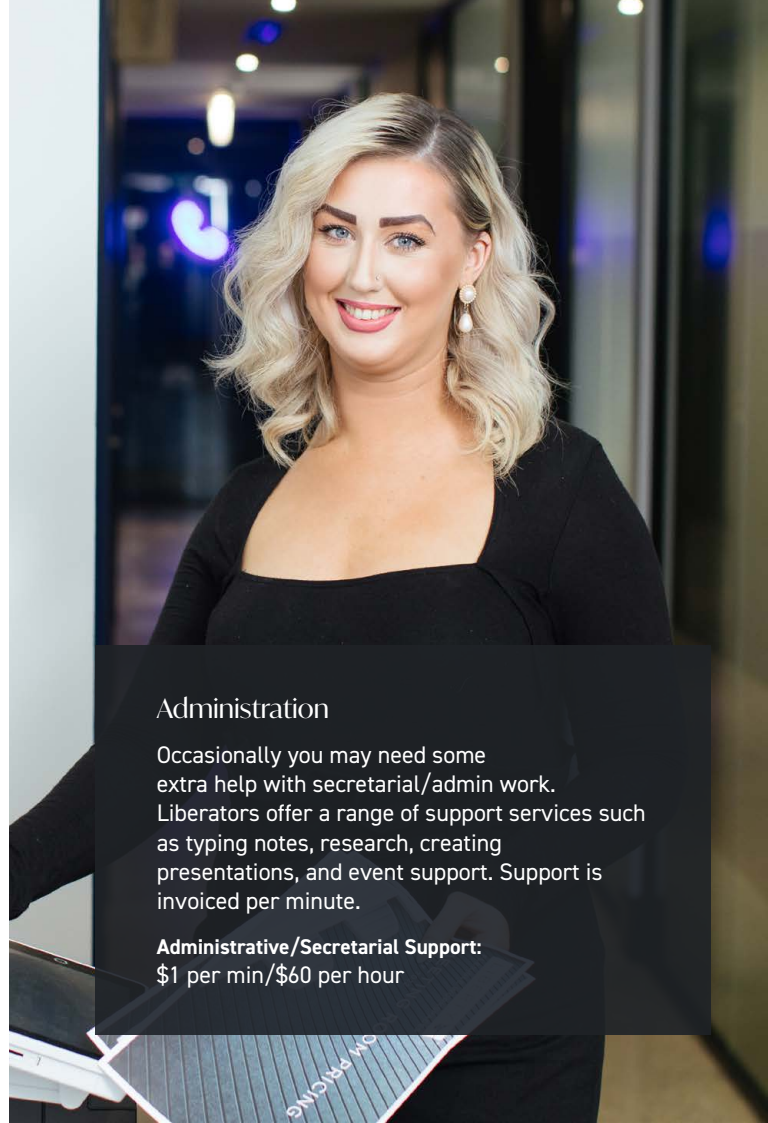




## Support Services

Item	Cost
Printing A4 Black and White	\$0.10 per page
Printing A4 Colour	\$0.25 per page
Printing A3 Black and White	\$0.15 per page
Printing A3 Colour	\$0.35 per page
Scanning A4 Black and White/Colour	\$0 FOC
Scanning A3 Black and White/colour	\$0 FOC
Document Binding	\$3.75 each
Document Laminating A4	\$3 per page
Document Laminating A3	\$4 per page
Postage /Couriers	Cost plus 20% handling and admin fee
Generic envelope Small C5	\$0.20 each
Generic envelope Large A4	\$0.40 each
Express Post- Small envelope	\$10.35 each
Express Post- A4 Large envelope	\$12.70 each
Office Stationery / Supplies	Request Quote

Costs shown exclude GST.



### Administration

Occasionally you may need some extra help with secretarial/admin work. Liberators offer a range of support services such as typing notes, research, creating presentations, and event support. Support is invoiced per minute.

**Administrative/Secretarial Support:**  
\$1 per min/\$60 per hour

Private office hire

	Per hour	Half day	Full day
per person (from)	\$20	\$70	\$130

Other

Item	Cost
Nespresso coffee pods	\$2.75 each
Nespresso coffee pods - 50 pack	\$70 per box (\$1.40 per pod)
Barista coffee (where available)	\$5.00 each
After hours air-conditioning* (minimum 2 hrs \$180)	from \$90 per hour
Courier services (worldwide & local)	Request quote
Dry cleaning	Request quote

Car parking bay (Subject to availability)

Location	Cost
143 St Georges Terrace, Perth CBD	\$900pm^
197 St Georges Terrace, Perth CBD	\$875pm^
37 St Georges Terrace, Perth CBD	\$850pm^
1060 Hay Street, West Perth	from \$390pm^
2 The Esplanade, Perth CBD	from \$1,000pm^
162 Grand Boulevard, Joondalup	\$100pm^
558 Pacific Highway, St Leonards	\$635pm^
56 Berry Street, North Sydney	\$850pm^
127 Creek Street, Brisbane	\$695pm^



A parking app is available for use at North Sydney (Divvy) and St Leonards (Wilson). This allows users to pay an hourly or day rate directly. 2 hours free parking is also available at St Leonards. Free period applies per vehicle, per day only. Re-entry into the car park on the same day does not reset free parking period.

\*Costs vary by location. ^Parking Levy included.  
Costs shown exclude GST.



## Fully Managed, All Inclusive, Secure IT Support

### Gold IT (Essential) \$180 per user per month, includes:

- Microsoft 365 (Business email and cloud file storage, Outlook, Word, Excel, Teams)\*
- Microsoft 365 Backup (email, files, and Teams data backed up to our secure data centre)
- Multi-Factor Authentication
- Phishing Protection & Email Security
- Email Signature Management
- File Storage / Document Management (SharePoint, Teams, OneDrive or NextDrive)
- PC Monitoring, Maintenance, and Optimisation
- Windows Device Encryption
- Next-gen Antivirus
- Breach Detection
- Privileged Account Management
- Asset and Vendor Management (Full lifecycle management of all your IT devices)
- Unlimited local 24/7 IT Support
- Dedicated IT Consultant

### Platinum IT (Advanced) \$250 per user per month, includes Gold IT, plus:

- Microsoft 365 Security Upgrade (advanced security features)
- Conditional Access
- Advanced Multi -actor Authentication
- Advanced AI Phishing and Spam Detection
- Advanced AI Collaboration and Cloud File Protection
- Endpoint Detection and Response
- Comprehensive Device Encryption
- Password Management
- Dark Web Monitoring
- Website & Social Media Monitoring
- Phishing Simulation
- Human Risk Management
- IT Policy Management

\*Software licensing such as Microsoft Office and Email is included





## Shared Network – Fully Managed Networks

Our Shared Network is designed to provide a seamless, high-quality, and secure internet experience and offers 3 levels of service.

Network	Connection Fee	Bandwidth <sup>1</sup>	Monthly p/p
<b>Shared Standard</b>	FREE	20/20Mbps	Free
<b>Shared Pro</b>	FREE	100/100Mbps	\$49
<b>Shared Elite</b>	FREE	250/250Mbps	\$79

## Private Networks – Dedicated, Fully Managed Networks (Private VLAN)

We also offer fully managed contracts ranging from 50Mbps to 200Mbps data speeds to your private fully managed network.

Bandwidth <sup>2</sup>	50Mbps	100Mbps	150Mbps <sup>3</sup>	200Mbps <sup>3</sup>
<b>Setup/Connection Fee</b>	<b>FREE</b>	<b>FREE</b>	<b>FREE</b>	<b>FREE</b>
<b>3-month term</b> (per month)	\$325	\$550	\$650	\$750
<b>6-month term</b> (per month)	\$300	\$500	\$600	\$700
<b>9-month term</b> (per month)	\$275	\$450	\$550	\$650
<b>12-month term</b> (per month)	\$250	\$400	\$500	\$600
<b>24-month term</b> (per month)	\$225	\$350	\$450	\$550
<b>36-month term</b> (per month)	\$200	\$300	\$400	\$500

<sup>1</sup>Maximum bandwidth – shared amongst the devices on the network

<sup>2</sup>Individual device limits can be set at your request

<sup>3</sup>Not currently available at our Hay Street centre





# Advanced VoIP Phone Solutions & 1300 Numbers

## Advanced VoIP Phone Solutions

Our VoIP solution is a full feature business VoIP phone solution. Does everything a modern phone solution should do and more.

This is a fully managed (unlimited support and change requests) solution.

Handset rental and all local, national and mobile call costs in Australia are included\*

- Work from anywhere configuration – you can take your desk phone anywhere
- Unlimited phone calls (local, national and mobile) - International calls are charged based on destination\*
- Voicemail – send to email functionality
- Hunt Group Functionality
- Call Forwarding
- Simultaneous Ring
- Sequential Ring



## 1300 Numbers

A 1300 number is a powerful marketing tool that boosts your customer experience and brand image.

### National Presence:

Expand your reach nationwide and tap into new markets.

With a 1300 number, customers from all over Australia can easily reach you, no matter where you operate.

### Increased Engagement:

Provide convenience to your customers with a single contact point. A 1300 number ensures a seamless experience, resulting in higher satisfaction and engagement.

### Enhanced Professionalism:

Stand out from the competition with a professional image.

A 1300 number adds credibility to your business and builds trust with customers.

### Improved Marketing:

Create memorable vanity numbers aligned with your brand. Advanced call routing and tracking features help you optimise marketing strategies.

### Cost-Effective:

Enjoy affordable plans and pricing options. Efficient call routing reduces the need for extra staff or infrastructure.

### Costs

1300 YourBusinessNameInNumbers: Secure it for \$500+GST plus \$50+GST per month

1300 RandomNumber: Secure it for \$250+GST plus \$50+GST per month

1300 number comes with 100 minutes of calls per month included. 10c p/min thereafter.